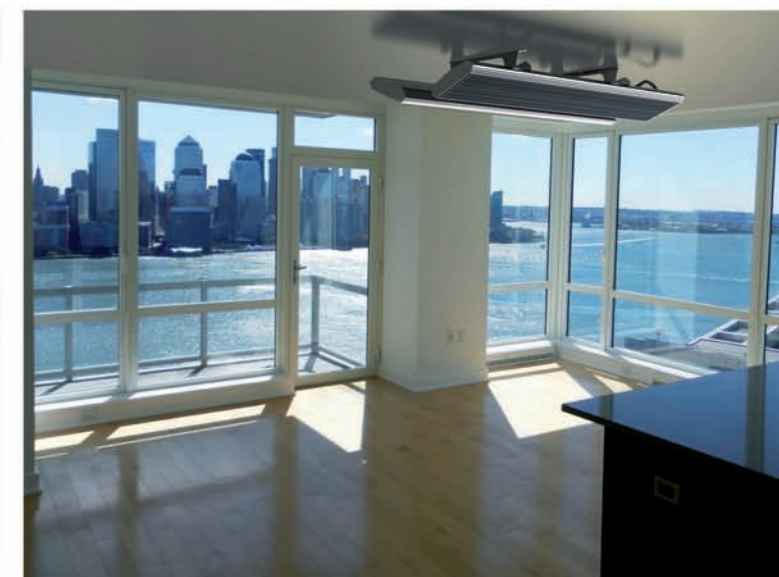
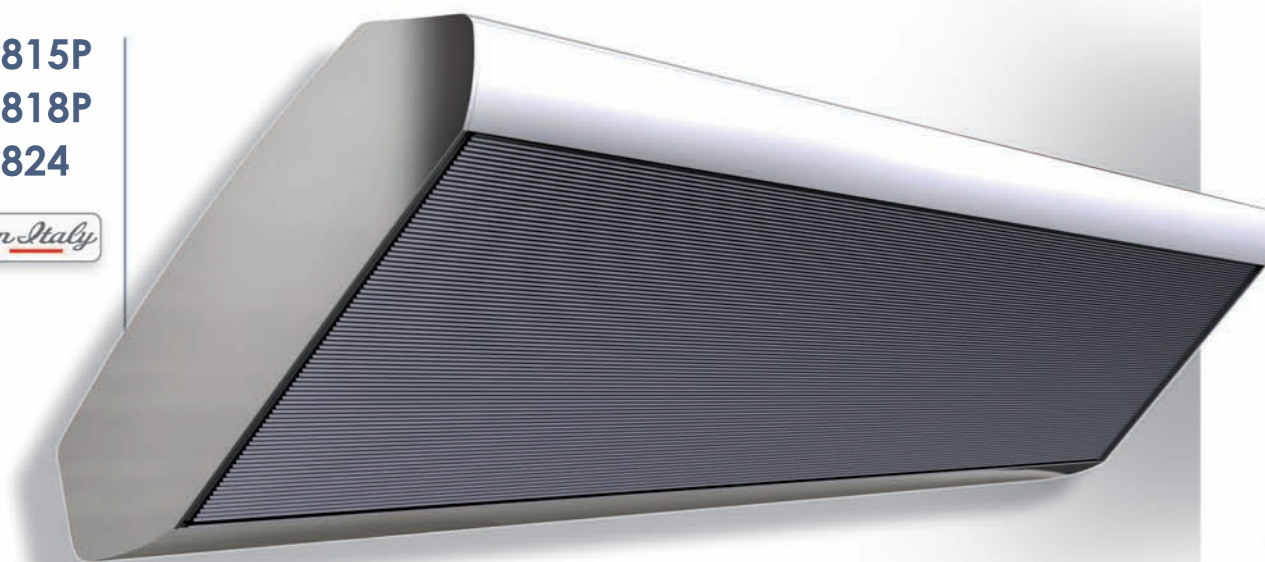


BLACK LIGHT II

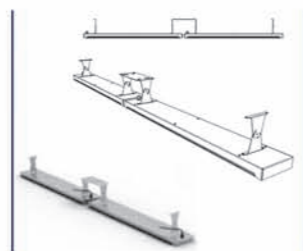
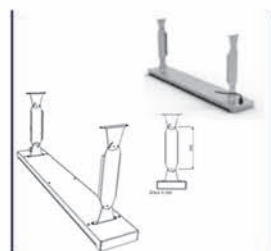


ART.7815P
ART.7818P
ART.7824

made in Italy



CARATTERISTICHE TECNICHE	7815P	7818P	7824P
Dimensioni cm	102,2X21,7X19,4	117,2X21,7X19,4	147,2X21,7X19,4
Peso	5,75 KG	6,55 KG	8,3 KG
Alimentazione	220-240V ~ 50-60Hz	220-240V ~ 50-60Hz	220-240V ~ 50-60Hz
Potenza	1500W	1800W	2400W
Cavo	Silicon H05SS-F 3m	Silicon H05SS-F 3m	Silicon H05SS-F 3m
Protezione IP	IP55	IP55	IP55
Classe isolamento	I	I	I
Master Box	1	1	1
Elemento radiante	IR-C	IR-C	IR-C
Carrozzeria	Alluminio Estruso	Alluminio Estruso	Alluminio Estruso
Metel Code	MOE7815P	MOE7818P	MOE7824P



ART.7706
EXTENSION POLE

ART.7705
END TO END

ART.7704
TWIN

MOE7706

MOE7705

MOE7704

IP55

